



E-RAD USER MANUAL



LEADING MANUFACTURER OF ADVANCED TORQUE SYSTEMS



PNEUMATIC



BATTERY



ELECTRONIC



ELECTRIC

THE INDUSTRY STANDARD...BELIEVE IT!

ELECTRIC SERIES (V-RAD)



Torque Range
100-2300 ft. lbs.

- ✓ **Quick adjust torque settings**
Fast and accurate “dial a torque” for maximum versatility and efficiency
- ✓ **Soft-start vary speed trigger**
Allows operator to safely and quickly set reaction arm before full torque is applied
- ✓ **Equal power in forward and reverse**
Convenience and cost effective use of same tool for break away and final torque
- ✓ **Advanced ultra-durable electric motor design**
Extreme duty designed to reduce maintenance cost and increase reliability
- ✓ **Advanced gearbox design**
PATENTED planetary gear reduction drive system delivering one of the highest power-to-weight ratios of any controlled bolting system

ELECTRONIC SERIES (E-RAD)



Torque Range
200-3000 ft. lbs.

- ✓ **Push-button select torque**
Fast and convenient error-free digital single increment torque settings
- ✓ **Digital torque console display**
Maximum accuracy by seeing the set torque value and the actual delivered torque value
- ✓ **Lightweight and Ergonomic pistol grip design**
Advanced low-profile handle to reduce operator fatigue and increase productivity
- ✓ **Extremely low noise level only 75db**
World’s quietest extreme torque gun, ideal for sensitive environments and standards
- ✓ **LED Green (Pass) or Red (Fail) indicator lights**
Unmistakable visual signal indicates status of torque procedure for maximum accuracy and speed

BATTERY SERIES



Torque Range
100-1300 ft. lbs.

- ✓ **Quick adjust torque settings**
Fast and accurate “dial a torque” for maximum versatility and efficiency
- ✓ **Soft-start vary speed trigger**
Allows operator to safely and quickly set reaction arm before full torque is applied
- ✓ **Equal power in forward and reverse**
Convenience and cost effective use of same tool for break away and final torque
- ✓ **Imagine the freedom – no air lines, no power cords!**
The lightweight design of the B-SERIES makes them ideal for any application, especially where compressed air and electricity are not readily available.
- ✓ **Advanced gearbox design**
PATENTED planetary gear reduction drive system delivering one of the highest power-to-weight ratios of any controlled bolting system

PNEUMATIC SERIES



Torque Range
50-8500 ft. lbs.

- ✓ **PATENTED planetary gear reduction**
Delivers one of the highest power-to-weight ratios of any pneumatic controlled bolting system
- ✓ **Smooth continuous flow of controlled torque**
Eliminates destructive hammering
- ✓ **Lightweight ergonomic pistol grip design**
Reduces operator strain and injury; resulting in increased productivity
- ✓ **Unmatched reliability and quality**
Delivered by one of the most advanced engineered gear boxes on the market



Table Of Contents

1.	Introduction.....	1
2.	Specifications.....	2
3.	System Component Description	3
3.1.	Controller.....	4
3.2.	Hand Held Tool.....	5
3.3.	Power and Control Cables	5
3.4.	Serial Communication Cable	6
3.5.	Software CD.....	6
3.6.	Calibration Certificate.....	6
4.	System Setup.....	6
5.	Operation Instructions.....	8
6.	Calibration Procedure	10
6.1.	Calibration Equipment	10
6.2.	Calibration Period.....	10
6.3.	Calibration overview.....	10
6.4.	Calibration Software	11
6.4.1.	Installation.....	11
6.4.2.	Uninstalling E-RADCal program	11
6.5.	Calibration Software Operation	11
6.6.	Calibration Testing.....	14
6.7.	Calibration Adjustment.....	15
7.	Data Retrieval	15
7.1.	Data Retrieval Operation	16
	Appendix A – Sample Calibration Certificate	19
	Appendix B – Option 1 Operation	20
	Appendix C – Option 2 Operation	21
	Appendix C – Option 3 Operation	23
	Appendix D – Contact Information	24

IMPORTANT:

DO NOT OPERATE THE TOOL BEFORE READING THIS USER MANUAL. IF BREAKDOWN, MALFUNCTION OR DAMAGE OCCURS, DO NOT ATTEMPT TO REPAIR. CONTACT NEW WORLD TECHNOLOGIES INC. OR YOUR LOCAL DISTRIBUTOR IMMEDIATELY.

IMPORTANT:

WHEN USING A POWER PLUG ADAPTER, MAKE SURE THE EARTH GROUND PIN IS PRESENT AND CONNECTED IN THE ADAPTER. NEW WORLD TECHNOLOGIES INC. DOES NOT RECOMMEND REPLACING THE SUPPLIED POWER CORD. IN THE EVENT THE POWER CORD IS REPLACED MAKE SURE THE NEW POWER CORD HAS AN EARTH GROUND PIN.

1. Introduction

RAD E SERIES are the world's most advanced electronic pistol grip torque wrenches. They are designed to provide a high degree of accuracy and repeatability using our patented, legendary gear box design and the precision of an electronic motor. Capable of data collection, angle measurement, accuracy of +/- 3% and torque values up to 4000 ft/lbs, **RAD E-SERIES** offer an affordable solution for electronic bolting needs.

- ✓ **Push-button select torque**
Fast and convenient error-free digital single increment torque settings
- ✓ **Lightweight and Ergonomic pistol grip design**
Advanced low-profile handle to reduce operator fatigue and increase productivity
- ✓ **Extremely low noise level only 75db**
World's quietest extreme torque gun, ideal for sensitive environments and standards
- ✓ **LED Green (Pass) or Red (Fail) indicator lights**
Unmistakable visual signal indicates status of torque procedure for maximum accuracy and speed

2. Specifications

<u>Torque Ranges:</u>	150 – 700 lb-ft	or	200-950 Nm
	300 – 1200 lb-ft	or	400-1600 Nm
	400 – 2000 lb-ft	or	550-2700 Nm
	500 – 3000 lb-ft	or	675-4050 Nm
	800 – 4000 lb-ft	or	1000-5400 Nm

Custom torque ranges are available up upon request

Units Supported: → Lb-Ft
→ Nm
→ Kg.F

Power Source: → 115V AC @ 10A or 220V AC @ 5A

Stated Accuracy: → +/-3%

Cables Length: → 15 ft / 4.5m (Standard), 20 ft/6m, 25 ft/7.6m

Controller: → Weather proof pelican or upright steel case (Figure 1)

Figure 1: E-RAD System



3. System Component Description

E-RAD System (Figure 2) includes the following:

- Controller (weatherproof or steel case)
- Hand Held Torque Gun
- Power and Control Cables (attached to hand held tool)
- Reaction Arm (w. snap ring)
- Serial Communication Cable (calibration / data retrieval)
- Calibration and Data Retrieval software CD
- Calibration Certificate
- User Manual



Figure 2: E-RAD System Components

3.1. Controller

Below in Figure 3 are all of the input/output ports in the **E SERIES**.

1. **Main Input Power Connector** – (115V AC) or (220V AC).
2. **Ethernet Communication Port** – Ethernet to Serial Port Cable Provided to connect your E-RAD to a PC for calibration and data retrieval.
3. **Connectors for Pistol Grip Torque Gun** – Military style connector provide a protected interface between the Controller and the Hand Held Tool.



Figure 3: Controller Connections

Below in Figure 4 the user interface is outlined:

1. **3 Button Touch Pad Overlay** – Provides the user the ability to increase/decrease torque / angle and change the units of measurement.
2. **LCD Display** – Visual feedback of the torque setting, torque achieved, preset angle and direction of rotation.
3. **Main Power Switch** – This switch will turn the E-RAD on / off.
4. **Green Power Light** – This light will illuminate when the power is turned on.



Figure 4: User Interface

3.2. Hand Held Tool

The **E-SERIES** pistol grip torque gun is trigger activated with a bi-directional forward / reverse switch. On the back of the gun housing is a 3 LED light display which notifies when the gun is ready for use, the torque cycle has passed or if the torque cycle has failed. Details are shown below in (Figure 5):

1. On/Off Trigger switch – hand tool activation;
2. Forward/Reverse switch – controls direction of rotation (This will also be stated on the control box display if in question of direction.)
3. **System Ready light** – Green light will illuminate when the tool is ready for use
4. **Fail light** – Red light will illuminate when the tool fails to complete the torque cycle
5. **Pass light** – Green light will illuminate when the tool completes torque operation.



Figure 5: Hand Held Tool

3.3. Power and Control Cables

Both power and control cables are hard wired from the factory to the hand tool. Each cable is secured with a spring strain relief to provide durability and flexibility.

Cables are connected to the control box with ¼ turn lock military style metal connectors and provide secure and solid connection to the Controller.

3.4. Serial Communication Cable

This cable enables serial communication interface between your computer and the Controller via standard RS232. This cable is required for calibration and data retrieval.

3.5. Software CD

E-RAD software CD contains 2 custom made windows based programs for the E-RAD system:

- E-RAD Calibration software – enables Lab/Field calibration of the hand held tool
- E-RAD Data Retrieval Software – enables the retrieval of up to 750 successful torque operations

3.6. Calibration Certificate

Each unit is calibrated with compliance to ISO 10012 using equipment that is calibrated according to known industry accepted standards traceable via NIST standards. See appendix A for a Calibration Certificate Sample.

4. System Setup



Caution

Before plugging in main power cord or Hand Held Tool cables; make sure the main power switch is in the OFF position. Failure to comply may result in equipment failure or equipment damage.



Caution

Do not force the connectors onto the Controller. Failure to comply may result in damage to the connectors.



Caution

Never lift the tool by the cables. Do not pull excessively on the cables or drag the Controller by pulling on the cables. Failure to comply may result in damage to equipment.



Caution

*****Before powering up the unit perform the following steps*****

1. Align control cable notch to the notch in the controller. Push the connector in forward and turn clock wise at least $\frac{1}{4}$ turn until the plug locks into the connector on the case;
2. Align power cable notch to the notch in the controller. Push the connector in forward and turn clock wise at least $\frac{1}{4}$ turn until the plug locks into the connector on the case;
3. Connect main AC power plug to an appropriate AC power source (115V AC or 220V AC according to the model);
4. Make sure serial communication cable is disconnected.




Caution

Make sure that all connectors are secured prior to turning the power switch ON. Failure to comply may result in equipment failure and/or equipment damage.

5. Operation Instructions

This section details the operation of the E-RAD system.

When the tool is in operation, the Reaction Arm rotates in the opposite direction to the Output Square Drive and must be allowed to rest securely against the adjacent bolt or a near by solid object that is on the same plane as the bolt that you are working on (Figure 6).

 **Warning**
Keep hands clear of the reaction arm when the tool is in use. Failure to comply may result in serious injury.

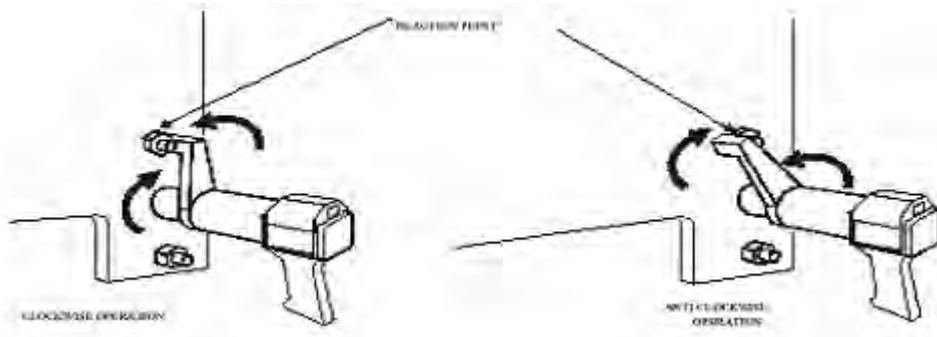


Figure 6: Reaction Arm

- Turn main power switch to ON position. When the **Green** ON light on the control box Assembly is illuminated the unit is powered.
- Once internal self test is completed and passed, the System **Ready** light on the hand held tool is illuminated. The display will flash model and firmware version for 2 seconds, then displays on the top row, last used torque setting and on the bottom row and the actual torque reading.
- To increase torque setting, press on the INCREASE arrow. If maximum value of torque setting is reached, the displayed value does not change. If the buttons are pressed briefly, the torque changes by a single increment. If the buttons are held down for 3 seconds, the torque will start to change in increments of 10 counts, and finally in increments of 100.
- To decrease torque setting, press on the DECREASE arrow. If minimum value of torque setting is reached, the displayed value does not change. If the buttons are pressed briefly, the torque changes by a single increment. If the buttons are held down for 3 seconds, the torque will start to change in increments of 10 counts, and finally in increments of 100.

- To change units of measurements press on UNITS. The units will cycle between Ft.Lb, Nm and Kg.F.
- Set the torque to the setting required for your application.
- To perform a torque operation:
 - Make sure the torque setting is correct
 - Couple the hand held tool with socket onto the bolt
 - Make sure the direction switch is set to forward (verify display if in question as this will show REVERSE / ACTUAL TORQUE (forward) on the bottom row)
 - Make sure reaction arm has a proper and safe point of reaction (Figure 6)
 - Press the trigger and hold it down until the hand held tool stops rotating and the **Pass** light illuminates. The hand held tool operates until the actual torque reaches the preset value (Pass indicator Illuminated), and then stops automatically. If the Trigger is released before the set torque is reached, or the tool fails to reach the required torque, the **Fail** indicator light is illuminated.
 - To clear an error or a failed indicator illumination set the direction switch to REVERSE (bottom line of LCD displays “REVERSE”)
 - Any error or failed indicator illumination is cleared;
 - Pressing the Trigger causes the tool to operate in the reverse direction as long as the Trigger is pressed.
 - If the tool is unable to reach the correct torque, switch the Direction switch to reverse, back the bolt off and then repeat the torque operation.

IMPORTANT NOTE:

If the tool is running for more than 20 seconds and the correct torque is not reached, the tool stops, and the Red Failed indicator illuminates on the handgrip.

- Once the set torque is reached and the green **Pass** light is illuminated, the tool reverses direction for a short pulse motion to release the reaction arm from the bolt.
- Upon completion of the bolting job or at the end of the day, power down the controller by turning the ON/OFF switch to OFF. It is not necessary to disconnect the cables from the controller.
- Download the torque records to a Personal Computer (windows based) if desired (recommended at the end of a job). See section 8.

6. Calibration Procedure

All E-RAD systems leaving New World Technologies Inc are calibrated in the Lab prior to shipping. A Calibration Certificate (see appendix A) is issued for each tool and shipped with each tool.

6.1. Calibration Equipment

Basic requirements:

- Personal Computer with CD-ROM and a serial port or USB port.
- Windows NT, Windows 2000 Windows XP or newer.
- Torque measuring equipment (display, transducer, ETC.)

6.2. Calibration Period

New World Technologies Inc recommends that the system be calibrated once a year according to the date specified on the Calibration Certificate. The calibration period complies with industry standards for precision measuring devices.

Customers may wish to perform calibration in their facility at different intervals within the period listed above for various reasons:

- Tool was exposed to extreme temperatures
- Rough handling or significant shock to the system
- Tool seems to be exceeding the accepted torque error or tolerance margin.

6.3. Calibration overview

To perform an E-RAD calibration, the controller must be connected to a PC with the serial communication cable and may require the Key Span USB to Serial Port Adapter which is supplied by New World Technologies with every **E-SERIES** tool. The PC must have the E-RAD Cal calibration software installed prior to calibration which is also provided by New World Technologies (See 6.4.1). The hand held tool must be coupled to a suitable test fixture fitted with a torque sensor / transducer.

The E-RAD Cal software allows us to calibrate 11 different calibration points on the systems which range from 7% of the guns output (amps) up to 100% of the guns output (amps) in 10% intervals. With this data comparing percentage of amperage vs. actual torque, the E-RAD creates a linear graph internally which allows the tool to deliver accurate, repeatable torque.

6.4. Calibration Software

Standard windows based calibration software is required for the calibration and is included with every tool.

6.4.1. Installation

To install E-RAD Cal software:

- Place the E-RAD Cal software CD in the CD-Rom drive;
- If installation does not start automatically, select my computer and double click (open) on the CD-ROM (D) drive. Select and double click the “setup” file (picture of computer); this will launch the installation program.
- Software is installed into the folder that is specified by the user and if no folder is specified this will be automatically saved to C:\Program Files\New World\ERadCal_V2.
- Once installation is completed, in your start menu there will be shortcut “New World”. This shortcut will open the E-RAD calibration software.

6.4.2. Uninstalling E-RAD Cal program

If for any reason the calibration software needs to be removed, follow these steps:

- Click on “Start Menu”
- Select “Control Panel”
- Select “Add/Remove Programs”
- Find and select E-RAD Cal in the program list and click on the “Remove” Button to remove the software from your computer.

6.5. Calibration Software Operation

Before launching the calibration software, make sure the calibration system is set up as follows:

- Connect the Serial Cable between the computer and the controller. Use the supplied Key Span USB to Serial Port adapter provided with the tool if you are using a computer that has only USB ports and no Serial port
- Turn the Controller on with the hand held gun and communication cable connected.

On the Computer:

1. In your Start Menu, click on the “New World” tab to open up the calibration software.
2. The software will automatically search for the Mint Drive. If the system does not automatically find a Mint Drive, click “search” on the screen in figure 7 and the program will detect the Mint Drive on the E-RAD.

- Once there is a controller listed under “List of E-RAD’s found on this computer”, click “OK”.

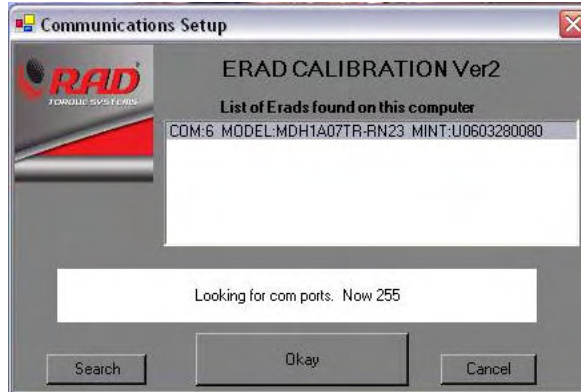


Figure 7: Communication Port Setup

- Once the software has opened (Figure 8) click the “connect” button on the lower task bar of the screen.

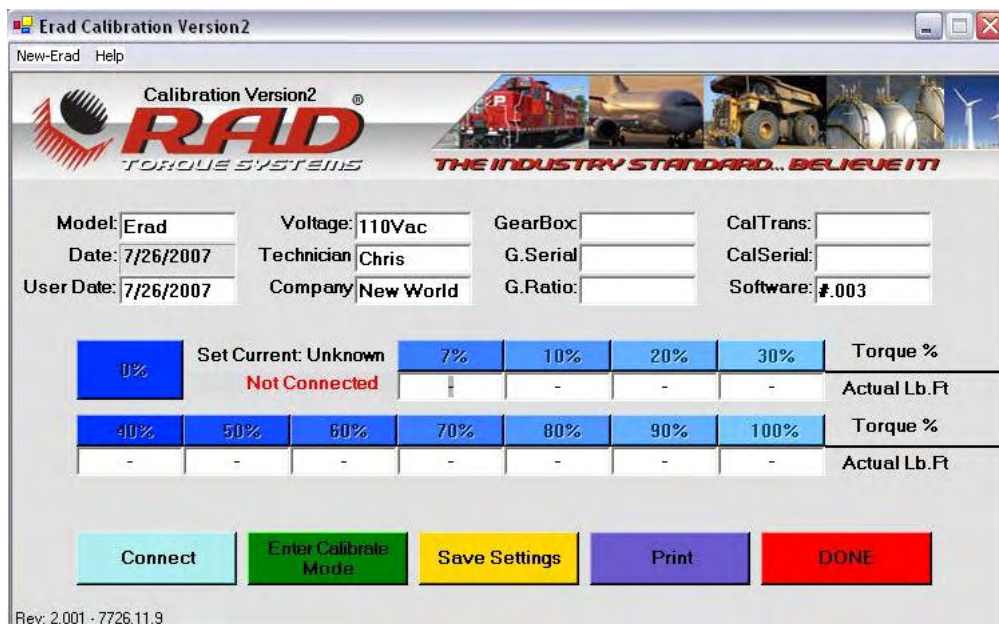


Figure 8: Main Calibration Screen

- Once connected the “connect” button will turn orange and read “disconnect” (Figure 9)
- Click the dark green “Enter Calibrate Mode” button and the calibration values will appear under the % intervals and the “Enter Calibration Mode” button will turn dark orange.
- To begin calibration, click the percentage intervals in a sequential order, according to the motor power percentage desired. The “%” buttons background will change from blue to purple and this will indicate which % value you are running.

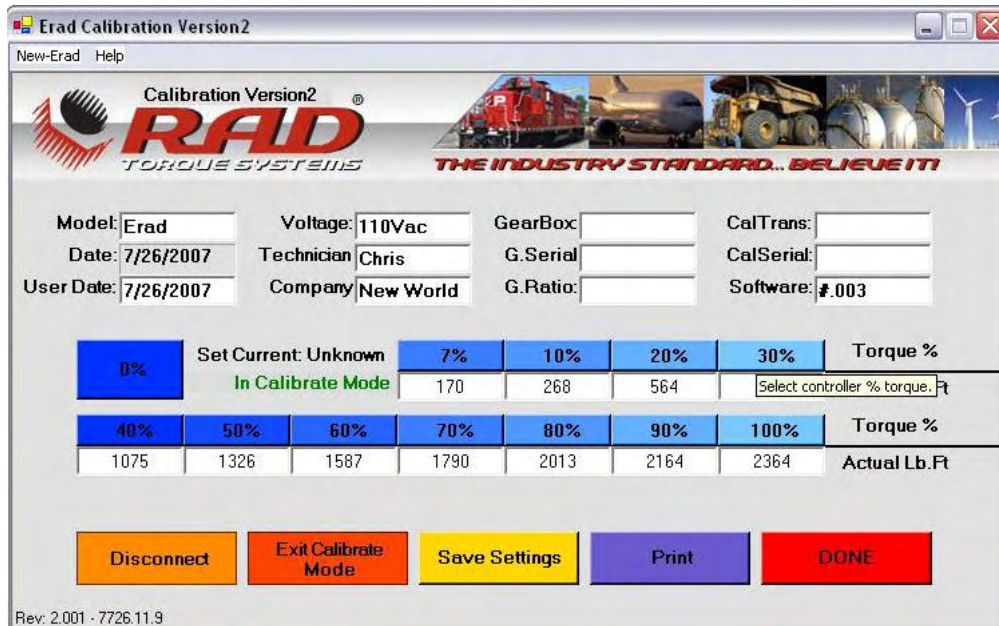


Figure 9: Start Calibration Screen

8. Select 7%, motor load to limit motor power output to 7%.
9. Make sure direction switch on the tool is in Forward position.

(REVERSE does not appear on the controller display VERIFY THIS)

- Depress the trigger on the tool. Do not let the trigger go until the tool stops automatically and displays the green passed light.
10. If the tool is stopped and the green Pass light on the tool is not illuminated or the Fail red light is illuminated, place the direction switch in REVERSE and depress the trigger for a couple of seconds. Repeat step 9.
 11. Record the reading on the transducer's display, take a couple more readings to make sure that the readings are in the same value range and take the average of the values.
 12. In the Calibration Torque table, place the cursor in the text box underneath the label value of 7% and type in the average torque value calculated in the previous step. Press Enter.

Attention:

Enter must be pressed after every entry, otherwise the value will not be recorded.

13. Repeat steps 8 to 12 for the other settings of 10% - 100% load.
14. Click on "Save Settings". This means that the controller communicated the calibration values to the computer and the values are saved.
15. To print out a copy of the calibration numbers for traceability, click on the purple "Print" button.
16. Turn ON/OFF switch on the controller to OFF position;
17. Disconnect Serial Cable from the controller.

6.6. Calibration Testing

If you choose to optimize your individual torque requirement on your E-RAD, perform the following procedures.

1. Turn ON/OFF switch on the controller to ON position;
2. Set the display to which ever torque value(s) you wish to optimize.
3. Set the tool in Forward direction and depress the trigger with the gun on the calibration stand. Let the tool complete the cycle and stop automatically and make sure that the Pass light illuminates without the fail light. Record the value displayed on the transducer's display.
4. Set the tool in REVERSE and depress the trigger for a few seconds and loosen the joint simulator. Repeat step 3. After the second reading, record the average value of the 2 readings observed on the transducer's display.
5. Verify the actual torque that is read out by the transducer against what the E-RAD is set to achieve.
6. To adjust the actual torque achieved to match the set value on the E-RAD, follow the below instructions.

IMPORTANT NOTE:

If calibration values are increased, actual torque applied decreases.
If calibration values are decreased, actual torque applied increases

Torque %	Actual Lb.Ft
0%	Set Current: Unknown
7%	170
10%	268
20%	564
30%	Select controller % torque, Ft
40%	1075
50%	1326
60%	1587
70%	1790
80%	2013
90%	2164
100%	2364

Figure 10: Adjust Values

6.7. Calibration Adjustment Example

1. Example: E-RAD set to 1800 ftlbs = Transducer reads out 1750 ftlbs.
2. All though this value is within +/- 3%, we can narrow this difference.
3. By following steps 1 through 7 in section (6.5) re-connect to the E-RAD calibration software.
4. Once connected, in the percentage intervals find the % value that is closest to the torque value that you are trying to adjust.
5. For our example of 1800 ftlbs, 70% in (figure 9) is the value that we are going to adjust.
6. To bring the actual torque up from 1750 to 1800 ftlbs, we are going to change the 70% value from 1790 down to 1760.

Remember the general rule that to bring a torque value up, we must lower the calibration value and to lower a torque value, we must raise the calibration value.

7. Save Settings.
8. Turn your E-RAD off, unplug the communication cable and re-start your E-RAD.
9. With the torque value on the controller set to 1800 ftlbs, complete a torque cycle on the calibration stand and verify the actual torque read by the transducer to the torque value set on the controller.
10. If you are still not satisfied you may repeat these steps.

Notes:

1. Generally for every (1) calibration value you change, the actual output torque will be adjusted by 2. For Example...
2. If the value you are trying to change is right in between to percentage intervals (20% / 30%), make adjustments to both percentage values.

NOTE: By adjusting both of these values, this may effect the accuracy of other torque settings on your E-RAD.

7. Data Retrieval

E-RAD torque systems store the records of up to 350 successful torque cycles. The data retrieval system does not record **“FAILED”** torque cycles and will only record cycles that **“PASS”**. Below is a detailed outline on how to install and operate your data retrieval program.

Minimum Requirements:

1. Personal Computer with CD-ROM and a serial port or USB port.
3. Windows NT, Windows 2000 Windows XP or newer
4. E-RAD Calibration software already installed on the same PC;
5. Microsoft Excel installed on the same PC.

The software does not require installation but the following setup must be performed:

1. Insert E-RAD Calibration Software CD in to the CD-ROM drive;
2. Select my computer and double click (open) on the CD-ROM drive. Select “E-RAD Data V2.003 Setup” folder and then double click the “Setup” file.
3. From here the setup will guide you through installing the software onto your computer.
4. After the setup is complete, unless otherwise specified the Data Retrieval Software will be installed in My Computer/Program Files/E-RAD-Data. From here, copy the short cut of the E-RAD Data Logger and paste this onto your desktop for easy accessibility.

7.1. Data Retrieval Operation

- 1.) Before opening the E-RAD Data Retrieval Software, connect your E-RAD Control Box to your computer using the Serial Communication Cable and Key Span USB to Serial Adapter if necessary. Turn the E-RAD “ON”.
- 2.) Open the Data Retrieval program.
- 3.) Once open the below screen will automatically detect which port and baud rate your E-RAD is connected to (**Figure 1A**). Once detected, the COMM PORT SETUP will display your computers connection to the E-RAD (**Figure 1B**).



(Figure 1A)

(Figure 1B)

Figure 10: Data Retrieval Main Screen

- 1.) Once the Data Retrieval main screen appears, fill out your desired information into the screen (Operator ID, Job Number, Job Location, Completion Date, Completion Time).
- 2.) Click “Connect to E-RAD” on the interface and the “**RED**” Disconnected will turn “**GREEN**” and display Connected.
- 3.) Click on “Download Data”.



(Figure 10)

- 4.) The Data Retrieval Software will automatically open up an excel spreadsheet and download all of the stored data. This will take approx 30 seconds.
(Figure 11)

ERAD System	ERAD OPTION: 3			
Operator I.D	NEW WORLD Technologies			
Job Number	1-800-983-0044			
Job Location	www.radtorque.com			
Completion Date				
Completion Time				
Download Date	6/18/2007			
Download Time	12:31:36 PM			
Bolt Number	Preload Torque	Final Torque	Set Angle	Final Angle
1	400	404	Zero	Angle
2	400	403	Zero	Angle
3	400	402	Zero	Angle
4	400	1348	20	20
5	404	1285	10	10
6	0	110	96	96
7	0	0	0	0
8	0	0	0	0
9	0	0	0	0
10	0	0	0	0
11	0	0	0	0
12	0	0	0	0
13	0	0	0	0

(Figure 11)

- 5.) Save this file under any file name and in your desired location in your computer and your bolting specs are now recorded and accessible in your system.
- 6.) After the download is complete, return to the Data Retrieval Software (Figure 10) and click on “Clear Data”.
- 7.) Your E-RAD has now transferred all data to your personal computer and the memory is clear and ready for another sequence of bolting application

Appendix A – Sample of Calibration Certificate

New World Technologies Inc.

30580 Progressive Way
 Abbotsford, British Columbia.
 V2T 6Z2
 Tel: 604-852-0405
 Fax: 604-852-0269

E-RAD 2000

Certificate #
 Issue # 1

Certificate Of Calibration

Model	E-RAD 2000	Customer	
Serial Number			
Capacity	2000	Temp	72 deg.
Voltage	115VAC	Humidity	52%
Accuracy	+/-3% of Digital Setting	Procedure	NWT0007
Calibration Date	4-Apr-07	Units	FT.LB
Calibration Due Date	4-Apr-08		
Calibration Technician	Chris denBraber		

Torque Calibration Chart



Test Equipment

Torque Transducer Model Number:	ITF-5000
Torque Transducer Serial Number:	2858-1
Calibration Due Date:	8-Jul-07
Capacity:	5000
Units:	ft.lbs.
Stated Accuracy : +/- .5% of Full Scale	Calibration Standard Number: MI-09-04-8041

Appendix B – Option 1 Operation

Selector switch provides the ability to program up to 8 torque settings, 1 per switch position. These settings are usually the most common settings used and allow a fast switch between torque settings instead of dialing up/down the torque each time a different torque is required. This option includes a lockout key switch which enables/disables torque changes via the keypad and switch position programming.

Programming a switch position:

1. Place the switch knob to the position to be programmed;
2. Turn the key to the right (in this position key removal is not allowed);
3. Press increase or decrease to reach the torque setting required;
4. if more positions are required to be programmed, turn the switch knob to the next position and repeat step 3;
5. After the last position programming turn the key left and remove the key;
6. Positions are now programmed and ready to use.

Note:

When the key is removed the keypad is disabled, pressing on any of the buttons will have no effect.

Appendix C – Option 2 Operation

Standard Features:

- ✓ All E-RAD torque/angle pre-sets will come pre-set to zero from the manufacturer and are to be adjusted to the desired settings by the user. This is outlined below.
- ✓ If the angle is set to zero than no angle movement will take place.
- ✓ If the torque is set to zero, no initial torque will take place and the tool will only perform the programmed angle movement only. The tool will walk up and seat the reaction arm and then complete the angle movement.
- ✓ If both the torque and angle are set to zero the tool will not operate.

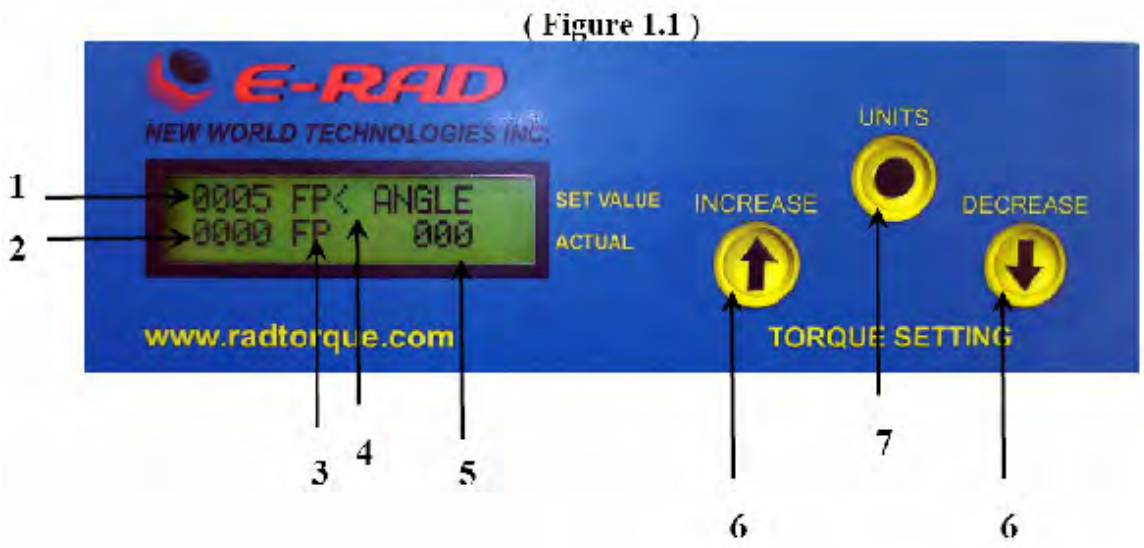
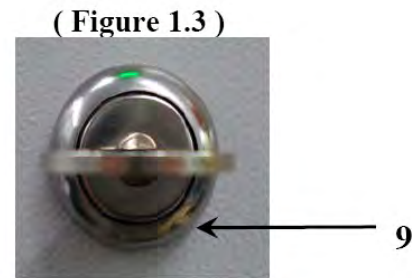
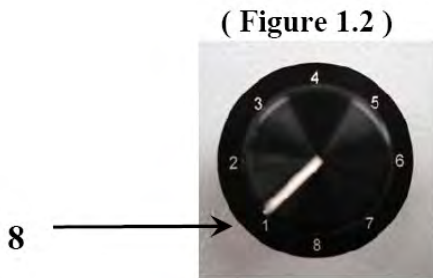
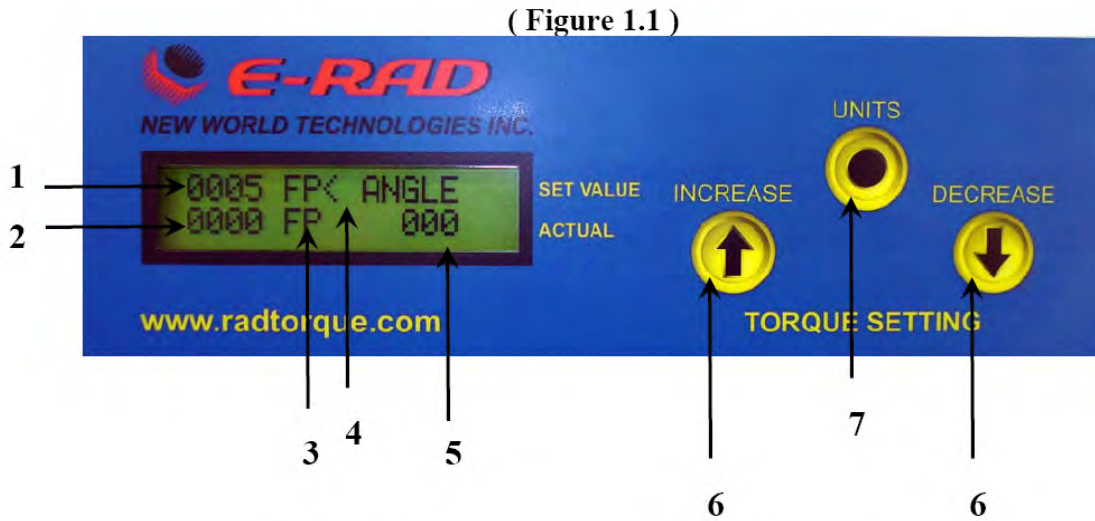


Figure 1.1 = User Interface (above)

- (1) This indicates the initial torque value that the E-RAD will achieve before initializing into the angle movement.
- (2) This will indicate the actual torque applied by the E-RAD in your initial torque cycle.
- (3) This will indicate which unit of measurement your E-RAD is operating in. This system can operate in ft.lbs / Nm / or KgF.
- (4) This arrow will indicate which value or setting you would like to adjust. In Figure 1.1 this arrow is positioned to the right of the FP (ft.lbs) which means that by pressing the increase / decrease buttons, you will be able to scroll through the different units of measurement.
- To change the position of the arrow which will allow you to adjust either the initial torque, units of measurement, or angle movement, press the “Units” button (7) to move this arrow to the right of your desired feature that you would like to adjust.
- (5) This will indicate what angle movement the E-RAD is programmed to perform after the initial torque cycle. Once the cycle is complete the E-RAD will display angle move done.
- (6) This increase / decrease button allows the user to increase torque, angle or change the unit of measurement.
- (7) The “units” button allows the user to scroll through which feature they would like to adjust. This arrow is explained in (4) above.

Appendix D – Option 3 Operation



Standard Features:

- ✓ All E-RAD torque/angle pre-sets will come pre-set to zero from the manufacturer and are to be adjusted to the desired settings by the user. This is outlined below.
- ✓ Positions (1 through 8) will have the option of torque and angle.
- ✓ If the angle is set to zero than no angle movement will take place.
- ✓ If the torque is set to zero, no initial torque will take place and the tool will only perform the programmed angle movement only. The tool will walk up and seat the reaction arm and then complete the angle movement.
- ✓ If both the torque and angle are set to zero the tool will not operate. This can be used as a safety lock out setting on the selector switch.

Figure 1.1 = User Interface

- (1) This indicates the initial torque value that the E-RAD will achieve before initializing into the angle movement.
- (2) This will indicate the actual torque applied by the E-RAD in your initial torque cycle.

- (3) This will indicate which unit of measurement your E-RAD is operating in. This system can operate in ft.lbs / Nm / or KgF.
- (4) This arrow will indicate which value or setting you would like to adjust. In Figure 1.1 this arrow is positioned to the right of the FP (ft.lbs) which means that by pressing the increase / decrease buttons, you will be able to scroll through the different measurements.
- To change the position of the arrow which will allow you to adjust either the initial torque, unit of measurement, or angle movement, press the units button (7) to move this arrow to the right of your desired feature that you would like to adjust.
- (5) This will indicate what angle movement the E-RAD is programmed to perform after the initial torque cycle. Once the cycle is complete the E-RAD will display angle move done.
- (6) This increase / decrease button allows the user to increase torque, angle or change the unit of measurement.
- (7) The “units” button allows the user to scroll through which feature they would like to adjust. This arrow is explained in (4) above.

Figure 1.2 = Selector Switch

- Positions 1 through 8 can be programmed with your specific torque / angle values that you input into the system. To program these settings simply place the dial on the position of your choice, program in the desired torque / angle settings that are required and then repeat this for all of the settings between position 1 and 8. Once values are programmed into a setting, they will be saved and stored until changed by the user. The user can switch back to position 1 at any time and their pre-set values that they programmed in will come up on the screen and the system is ready to go.

Figure 1.3 = Key Lock

- This feature allows the operator the ability to lock out the user interface buttons so that the pre-set torque / angle values cannot be adjusted by the operator eliminating the chance for error.
- If the key is removed from the unit, all unit selectors will be locked. To re-adjust these settings, place the key back into the E-RAD and give the key a ¼ turn to the vertical position. This will allow for the units selectors to be active again.

Appendix D – Contact Information



New World Technologies Inc.

30580 Progressive Way

Abbotsford B.C.

Canada V2T 6Z2

Tel: (604) – 852 – 0405

Toll Free: 1-800-983-0044

Fax: (604) – 852 – 0269

Email: info@radtorque.com

www.radtorque.com

E-RAD Limited Warranty

New Tool Warranty

Any new tool branded with the RAD name and purchased from New World Technologies Inc., or through one of its authorized distributors or agents, is warranted to the original purchaser against defects in materials and workmanship for a period of one (1) year from the date of original calibration. The electronic control module is covered for a period of six (6) months from the date of calibration. Under the terms of this warranty, New World Technologies Inc., at its option and F.O.B. either its factory or an authorized service center, will replace or repair for the original purchaser, free of charge, any part or parts, found upon examination by New World Technologies Inc., to be defective in material or workmanship or both. If any product or part is replaced or repaired under the terms of this warranty, that product or part will carry the remainder of the warranty from the date of original calibration.

Repaired Tool Warranty

Once a tool is beyond its new tool warranty, New World Technologies Inc., for a period of three (3) months from the date of repair, will replace or repair for the original purchaser, free of charge, any part or parts, found upon examination by New World Technologies Inc., to be defective in material or workmanship or both. If any product or part is replaced or repaired under the terms and conditions of this warranty, that product or part will carry the remainder of the warranty from the date of original repair.

To qualify for the above mentioned warranties, written notice to New World Technologies Inc. must be given immediately upon discovery of such defect, at which time New World Technologies Inc. will issue an authorization to return the tool. The defective item must promptly be returned to New World Technologies Inc. all freight charges prepaid. When returning a tool, the reaction arm/s being used with the tool must also be returned.

New World Technologies Inc.: Telephone: 1 800 983 0044 Email: info@radtorque.com

Exclusions from Warranty

At New World Technologies Inc.'s sole judgment tools or accessories that have been altered, damaged, misused, abused, badly worn due to excessive utilization, lost, or improperly maintained will NOT be covered under the terms of this warranty.

Tools returned without the reaction arm/s will not be covered under the terms of this warranty. Consumable parts and accessories (such as extensions, reaction blanks/arms) and the are not covered under this warranty.

Tools that have been relabeled without prior written consent of New World Technologies Inc. will not be covered under this warranty.

Equipment and accessories not manufactured by New World Technologies Inc. (measuring equipment, etc.) are warranted only to the extent of the original manufacturer's warranty.

**There is no other express warranty. Implied warranties, including those of merchantability and fitness for a particular purpose are limited to one year from date of calibration and to the extent permitted by law. Liability for consequential damages under any and all warranties are excluded to the extent exclusion is permitted by law.*

LIGHTER • FASTER • STRONGER



ABOUT NEW WORLD TECHNOLOGIES INC.

New World Technologies is a leading Canadian manufacturer of pneumatic, battery powered, and electronic pistol grip torque wrenches. Our advanced products have proven to be successful all over the world in such industries as oil and gas, petrochemical, mining, aerospace, and manufacturing. We continue to invest in and employ the latest technology to achieve the highest level of innovation, quality, and performance - which has resulted in multiple patents for our products.

NEW WORLD TECHNOLOGIES INC.

30580 Progressive Way
Abbotsford, BC V2T 6Z2 Canada

T: 604-852-0405

F: 604-852-0269

E: info@radtorque.com

WWW.RADTORQUE.COM